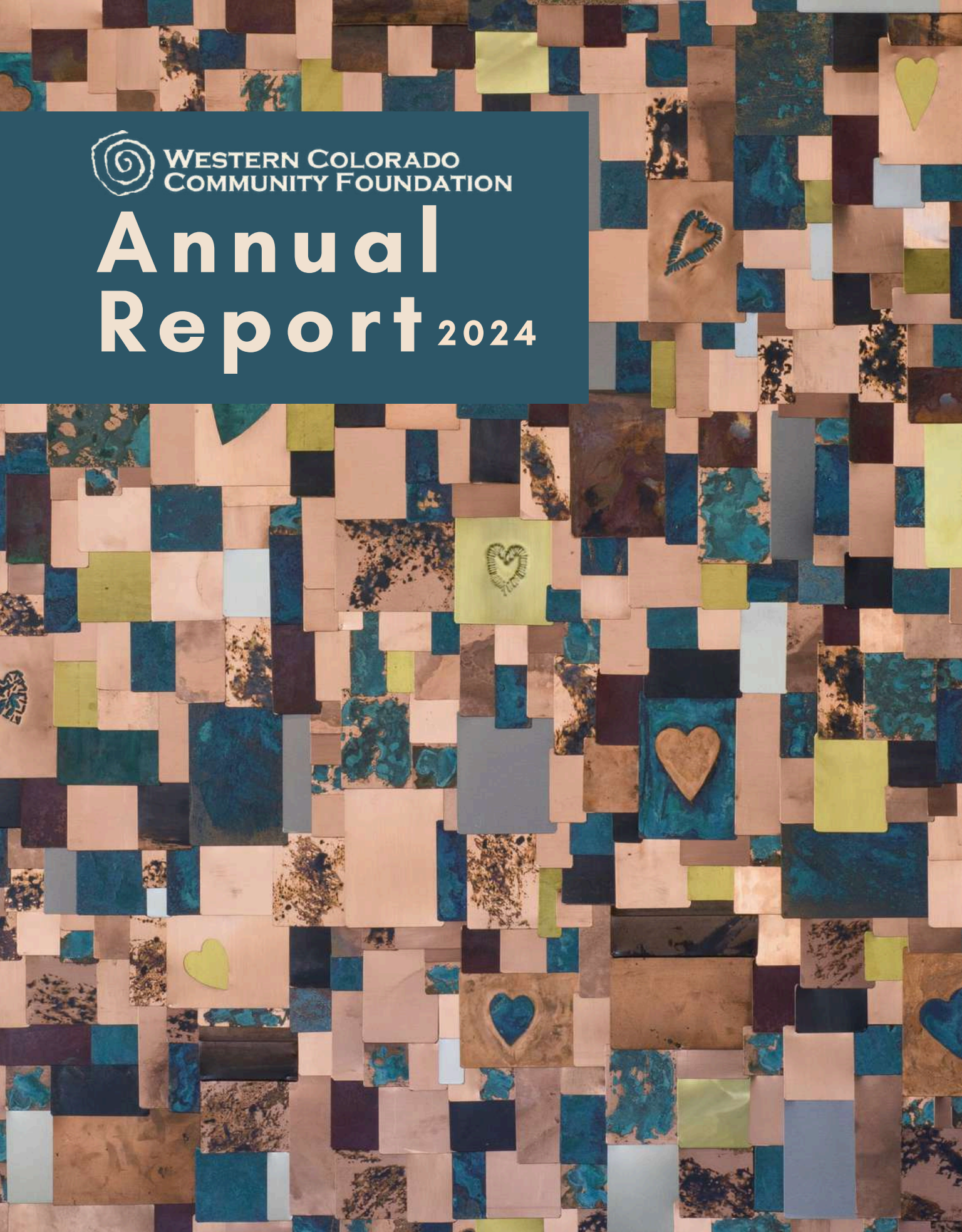




WESTERN COLORADO
COMMUNITY FOUNDATION

Annual Report 2024





*Cover art: Gratitude Patchwork by Jim Raymond (2024),
in the Center for Philanthropy lobby.*

Together In Gratitude

At the heart of our mission are the values of generosity and gratitude—people caring for others, volunteering to improve lives, and giving back. For many of us involved in community work, gratitude is the driving force behind our efforts.

Last year, we commissioned local artist Jim Raymond to create a distinct piece of art for the lobby of our Center for Philanthropy. Titled **Gratitude Patchwork**, this artwork embodies the concept of a quilt—a masterpiece crafted from many unique elements. Individual squares, each made from different materials, textures, and sizes, come together in copper and bronze to form a stunning whole.

Throughout this piece, gratitude is symbolized by a recurring heart shape. Each heart is unique, no two exactly alike, reminding us that it takes all of us, working together, to power this work and create something beautiful.

In this year's 2024 Report to the Community, we celebrate this core value: Together in Gratitude. On the following pages, you'll read stories of donors who invest in nonprofit partners that serve others, expand services, and improve lives across western Colorado.

The Western Colorado Community Foundation had its best year yet, awarding more funding and larger grants to community organizations than ever before. Our continued growth is fueled by those who believe in investing in their community and partnering with us to make a difference.

We invite you to join us in building strong, vibrant communities filled with opportunities for all. If you're in downtown Grand Junction, please stop by to see our **Gratitude Patchwork**.



Anne Wenzel
CEO & President



Dan Prinster
Board Chair

2024 Highlights

Total assets:

\$186M

9.7% year over year increase

Grants & Scholarships Distributed:

\$8.3M

27.5% year over year increase

New Donations & Legacy Gifts:

\$13.3M

New Donor Funds Established:

14

Sunshine Oncology Legacy Fund

The Sunshine Oncology Legacy Fund supports nursing staff in obtaining their oncology certification at Community Hospital.

Established in memory of Michelle Padilla Rangel, who courageously battled cancer until the age of 25, the fund reflects her family's desire to honor her legacy.

Working with our Community Foundation, Michelle's family created an endowed fund to recognize the exceptional care she received at Community Hospital and to support future nurses aspiring to specialize in oncology. Each year, the fund's earnings cover the costs of oncology certification for several nurses, promoting continued excellence in patient care.

In 2024, a heartfelt dedication ceremony brought together Michelle's family and the Oncology Department team at Community Hospital. The family shared their story and expressed deep gratitude for the compassionate care Michelle received.



Michelle Padilla Rangel

Types of Funds

Donor-Advised Fund

The most flexible of our options, donors stay involved in their annual grantmaking decisions.

Geographic Area Fund

Also known as a Local Community Fund, a group of donors raise and distribute funds to benefit a specific community they live in.

Field of Interest Fund

Donors select the area of impact for their funds and WCCF makes grants based on community needs and opportunities.

Designated Fund

Donors choose favorite charitable organizations to automatically receive annual distributions.

Our Community Foundation offers a variety of fund options and a great deal of flexibility for donors. Donors can establish a permanent endowment or a fund for a limited-time duration.

Community Grants Fund

Unrestricted gifts to this fund enable our Community Foundation to respond to new and changing needs in our communities.

Scholarship Fund

Donors set guidelines to financially support students pursuing higher education or vocational programs.

Nonprofit Agency Fund

Nonprofit organizations establish an endowment fund to generate annual income to support their operations.

The Power of Endowment

Established in 2019, the Roy and Pamela Blythe Fund reflects the donor couple’s deep commitment to students and schools in Mesa County School District 51. As a founding member of the D51 Foundation, Roy Blythe played a role in creating that organization to secure additional funding for K-12 education. Their designated fund ensures support for D51 Foundation programs such as technology upgrades and professional development for teachers. Additionally, the fund provides a vehicle for others who care about students and schools to make an investment in education.

The power of this endowment is in the ability to provide permanent funding for D51 Foundation, that grows annually through additional donations and solid investment. Since its inception, the fund has awarded nearly \$30,000 in grants, while its endowment balance has increased by over 25%.

**Donations to Endowment
Over 5 Years:**

\$108,175

**Grants to D51 Foundation
Over 5 Years:**

\$28,160

Endowment Balance:

\$137,406
(as of 12/31/24)

How it Works

Endowment gifts are often described as gifts that keep on growing and giving. Contributions are invested for long-term growth, with a portion of the fund’s value distributed annually to organizations improving our communities. As investment earnings accumulate, the impact of donations grows indefinitely, ensuring the investment is perpetual and never gets depleted.



Ways To Give

Our Community Foundation offers a variety of giving tools to help people achieve their charitable goals. Most charitable gifts qualify for maximum tax advantage under federal law.

Cash Gifts

- Checks
- Online
- Qualified Charitable Distributions

Non-Cash Gifts

- Stocks and Securities
- Real Estate
- Business Interests
- Royalties

Planned Gifts

- Bequests
- Retirement Accounts
- Charitable Trusts
- Life Insurance

For more information about our giving options, visit wc-cf.org/ways-to-give or call (970) 243-3767.

Dave and Mary Wood Plaza

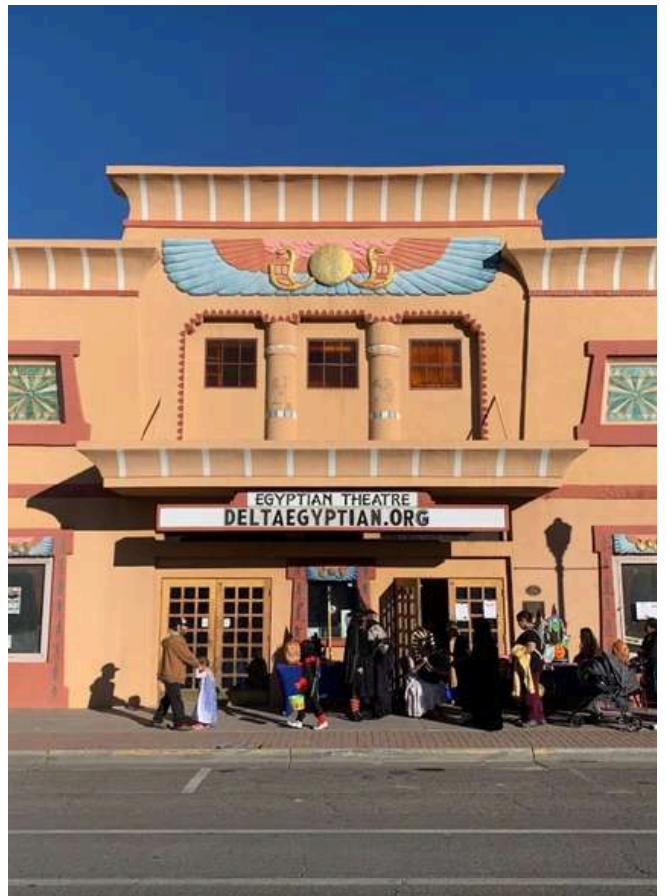
In September 2024, Colorado Mesa University celebrated the grand opening of the Asteria Theatre, a state-of-the-art performance venue. On the same day, the university dedicated the Dave and Mary Wood Plaza, honoring the couple's lifelong advocacy for the arts.

As long-time donors to our Community Foundation, the Woods championed music and the arts throughout Ouray and Mesa County, leaving a lasting impact on the cultural landscape of western Colorado. The dedication of the plaza serves as a fitting tribute to their commitment to the arts and their community.



Delta Egyptian Theater's New Chapter

The Delta Egyptian Theater, which opened its doors in 1928, is a historical and cultural landmark in western Colorado. As one of only six remaining Egyptian Theaters of the original 100 built in the U.S. after the first World War, the theater is undergoing a restoration to preserve its rich history and distinctive character while adapting to the needs of modern audiences. To further enhance its offerings, the Delta Egyptian Theater Corporation has acquired an adjacent building with plans to expand the lobby and introduce a café, along with other amenities to enhance the visitor experience. These efforts are bolstered by grants from our Community Foundation. Recent investments have already restored the theater's status as a vibrant cultural center and lively gathering place for the community.



Golden Girls Expansion

In response to the increasing rate of homelessness among women over age 50, the Golden Girls Project was established in 2020 by The Joseph Center. This initiative has steadily grown, and in 2024, with funding from our Community Foundation and the support of numerous partners, the Golden Girls Project expanded into its own dedicated building.

This new building now provides housing for sixteen women, along with on-site case management and health services, fostering stability and independence. The Golden Girls Project has become a lifeline in the community, helping women transition to permanent housing and reclaim their futures with dignity.



Guests of the Golden Girls Project

Home Trust of Ouray

Like many communities in western Colorado, Ouray County faces a significant shortage of workforce housing. Home Trust of Ouray is addressing this gap by developing permanent, affordable homes for income-qualified families across several active projects. Supported by funds from our Community Foundation, initiatives include the Parkside Duplexes, a Six-Plex acquisition, and the future Riverwalk rental properties.

As a Community Land Trust, the Home Trust of Ouray ensures long-term affordability by retaining land leases and enforcing resale price restrictions. With a goal of creating 43 affordable housing units by 2028, this initiative is providing stability and opportunity for local families.



Patton Family, Homebuyers

HEALTHY TECH

Promoting Well-being in the Digital Age

Hold The Phone



Cell Phone Yondr Pouch

Supporting Mesa County School District 51's New Cell Phone Policy

In 2024, our Community Foundation's *Hold the Phone* campaign played a pivotal role in helping Mesa County School District 51 (D51) implement a new cell phone policy. Thanks to our generous donors, the campaign successfully raised \$100,000 to purchase cell phone holders for five high schools and eight middle schools across the district. Students put their phones in these holders in the morning and retrieve them once the school day is over. D51 leadership has reported overwhelming success with the new policy; one principal said there was a “noticeable improvement” from day one.

Statewide Recognition and Impact

Colorado Attorney General Phil Weiser took notice of the district's policy and organized a leadership forum to discuss the achievements of D51's *More Social, Less Media* campaign. This led the Colorado Education Initiative, a statewide nonprofit dedicated to positive change in Colorado's K-12 public education landscape, to create a case study titled “*More Social, Less Media: How Colorado's District 51 Advanced a Unified Cell Phone Policy to Enhance Student Learning and Well-being.*” This resource provides a guide to districts in exploring similar policies, detailing D51's journey from recognizing cell phone use as a priority to successfully crafting and implementing a policy that benefits students, families, and staff.

Ongoing Support and Future Plans

D51 received a \$50,000 grant from the Attorney General's office to develop a Pre-K through 12th grade curriculum promoting healthy technology habits. D51's Superintendent, Dr. Brian Hill, spoke at the state capitol, advocating for statewide legislation on policies for student cell phone use. He noted that the district has faced challenges from overuse of smartphones, but the implemented policy has led to increased student engagement, reclaimed instructional time, and garnered positive feedback from the community.



Cell Phone Storage Locker

Heads Up, Phones Down

The itsy bitsy spider felt ignored again.

Your phone doesn't need you.

They do.

HeadsUpParenting.org

Heads Up Parenting

A focus area of our Community Foundation is the mental health and well-being of young people. As part of this initiative, we work with community partners to promote healthy technology and social media habits.

In 2024, our Community Foundation launched **Heads Up Parenting** to highlight the importance of fostering more face-to-face interactions. This public education campaign targets parents and caregivers of infants ages zero to three years old, emphasizing the significance of consistent, unplugged, and engaged parenting. We continue to provide resources and information to remind everyone:

Your Phone Doesn't Need You. They Do.

An Award-winning Campaign

The **Heads Up Parenting** campaign, designed by Dan Delli-Colli of The One Two, received a 2024 Judges Choice Award from Ad Club Colorado at their annual The Fifty. This recognition highlights campaigns throughout Colorado that demonstrated breakthrough creativity.

<p>Bea, baa, black sheep, Mommy's on her phone.</p> <p>Your phone doesn't need you.</p>	<p>The parents on the bus scroll on and on.</p> <p>Your phone doesn't need you.</p>	<p>It's raining, it's pouring, and Daddy keeps scrolling.</p> <p>Your phone doesn't need you.</p>
---	---	---

“ I have to give the edge to **Heads Up Parenting** for a couple of reasons: the message – which is incredibly timely and relevant – is brought to life in a memorable and impactful way. From the nursery rhyme lines that get stuck in your head to the emotionally evocative illustrations, the craft of the campaign is unmatched. It's the kind of work that really hits you in the feels, especially if you're the target of the campaign. ”

AUSTIN O'CONNOR, AD AWARD JUDGE

Youth Outside and Offline

In 2024, Community Grants awarded \$125,000 to 14 Western Slope nonprofit organizations. The theme for these grants was **Youth Outside and Offline**, which supported after-school and out-of-school programs to get youth off their devices and into fresh air and the outdoors. The programs that were funded offered outdoor activities while teaching critical skills for healthy technology use, safe social media engagement, and reducing screen time. The **Youth Outside and Offline** grants were part of our Community Foundation's broader Healthy Tech strategy to enhance youth well-being in our communities.

2024 Grantees

- Access AfterSchool
- Buddy Program
- District 51 OWL Camp
- Eureka! McConnell Science Museum
- Girls on the Run of the Grand Valley
- Haven House of Montrose
- Nature Connection
- PEER Kindness
- R-5 High School for OWL Camp
- Riverside Education Centers
- Stepping Stones Roaring Fork Valley
- Summit 54 Advantage Program
- The Cycle Effect
- Voyager Youth Program



Grantee Highlights

Haven House

Located in Olathe, Haven House of Montrose offers transitional housing and support for homeless families, providing early childhood education and youth development programs. Haven House received \$10,000 to support summer youth programs by working with Friends of Youth and Nature to offer outdoor adventures while incorporating a digital citizenship curriculum.

The program aims to foster a love for nature, reduce screen dependency, and positively impact the futures and perspectives of children from at-risk families.



Access AfterSchool

Access AfterSchool serves over 1,000 youth each year from Garfield and Eagle counties, many of whom come from low-income families. The organization received a \$10,000 grant to enhance staff training and integrate digital literacy as one of their eight, core youth-development skills.

One instructor shared a powerful example of the program's impact: two boys chose to participate in a knitting class over engaging with social media, highlighting the value of providing meaningful and enjoyable alternatives.



Outdoor Recreation and Environment

Since 2018, our Community Foundation has created funding opportunities to support a multitude of projects related to the outdoors and environment with the long-term goal of increasing our organizational giving to this sector.

The CORE Fund supports conservation, outdoor recreation, and environmental initiatives in western Colorado. In 2024, members of the Giving Circle selected 12 organizations for funding, totaling \$70,000.

Colorado National Monument Association 60th Anniversary

Our Community Foundation helped double the impact for the Colorado National Monument Association (CNMA) with a challenge match grant of \$60,000 in honor of its 60th anniversary.

CNMA provides much needed assistance to the Colorado National Monument through funding, capacity, and programming. The National Monument and CNMA joined forces to hire the first Resiliency Ranger within the National Parks System to improve mental health and resilience for at-risk veterans and youth in the Grand Valley. In partnership with School District 51, the Resiliency Ranger created a workbook to help guide young people in outside activities to improve their well-being. Our Community Foundation was proud to help fund the creation of this well-received resource.

Hunger Relief

For over a decade, our Community Foundation has led efforts to alleviate hunger in our seven-county area. Supported by Mesa County Hunger Alliance and generous donors like the Colorado Health Foundation, our work continues to expand.

Celebrating 10 Years of the Lunch Lizard

Our Community Foundation and District 51's Food and Nutrition Services celebrated the 10th season of the Lunch Lizard's free, summer mobile meals program for children across the Grand Valley. The program added various community locations in Fruita in 2024 and has served over 200,000 meals since the program's inception.



Community Food Bank 7th Street Cafe

In 2024, Community Food Bank undertook a new opportunity to transform the closed 7th Street Deli into the 7th Street Community Cafe to improve access to fresh food, offer skills training to culinary arts students, and to diversify the Food Bank's income. Our Community Foundation funded this initiative with a \$50,000 challenge match grant to leverage donations and community support.



Unlocking Opportunity

We are thankful for the many donors who are dedicated to helping people reach their educational goals. In addition to higher education scholarships, we connect donors with education programs that support young people on their path to high school graduation and careers. Those interested in supporting a broader spectrum of educational opportunities work with us to offer financial assistance for extracurricular activities for middle and high school students, enriching their experiences and setting the stage for future success.



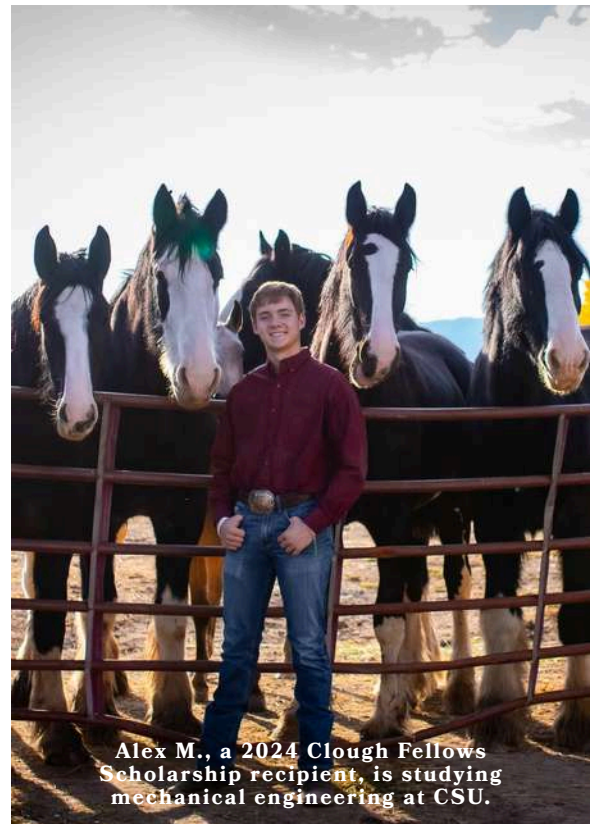
Imagination Library

Mesa County United Way sponsors the local Imagination Library, providing over 4,700 children with a book each month. Selected by experts for age-appropriate, inspiring content, the program delivers over 55,000 books annually across every Mesa County zip code. While nationally recognized, local chapters handle all fundraising. Our Community Foundation is proud to support this meaningful program, fostering early childhood literacy and a love of reading.

Scholarship Funds

In 2024, our Community Foundation awarded over \$780,000 in scholarships to 274 students pursuing their dreams of higher education or vocational training. This achievement was made possible through 35 scholarship funds established by donors committed to investing in education.

Anna Lee Janowitz	Jean M. Blue
Bill Patterson	Jeanette Wilkinson
Caddo	Kathy Pippenger
Dave and Mary Wood	Kay Armstrong
David Moore	Kittie Udd
Delta County School District	Laura R. Genelin
Didrickson-Niles	Leitzinger-Hallenbeck
Dr. Kit Neacy	Lena Sammons Reed
Edith May Cox	Mastin-Virgona
Eldon E. and Ruth N. Veirs	Natural Soda
Everett and Michael Memorial	Nick and Linda Hattel
Faye Shofner Tally	Plateau Valley Community
Fresh Start	ProSpace Interiors
Fruita Rotary/Flohr Career Pathways	Richard W. McGuire Jr.
Fruita Rotary/Marge Miller	Richard W. Pippenger
Fruita Rotary/Mike and Felicie Williams	Stewart/Watson/Wheeler
Genevieve Clough	Waldeck Nursing
J. Robert Young	Welden and Dorothy Crousen
Jason Manspeaker	Willson



Alex M., a 2024 Clough Fellows Scholarship recipient, is studying mechanical engineering at CSU.

A Legacy of Community Involvement

Hjalmar "Hal" Sundin was a member of the Glenwood Springs community since 1989. Working with our Community Foundation, Hal's two-part legacy provides scholarship support to students in Garfield County and grant funding through the Two Rivers Unrestricted Endowment (T.R.U.E.) Grants Fund.

The T.R.U.E. Grants Fund is an endowment dedicated to strengthening the communities of New Castle, Glenwood Springs, and Carbondale by providing funding to local non-profits. Grants are awarded through an application and committee review process, creating opportunities for new organizations and innovative programs to receive support. Hal's charitable interests of addressing unmet needs within the community is reflected in the impact of this fund.



2024 LCF Highlights

Since 2002, we have worked with community leaders to establish Local Community Funds (LCFs). This "give where you live" approach encourages residents to build charitable endowments for their local communities' long-term benefit.

Delta Community Fund (DCF)

Awarded \$10,000 to 11 nonprofits serving City of Delta.

Surface Creek Community Fund (SCCF)

Awarded \$16,950 to 11 nonprofits serving Cedaredge, Orchard City, Eckert, and Austin.

Ouray County Community Fund (OCCF)

Awarded \$47,400 to 23 nonprofits serving Ouray and Ridgway.

Two Rivers Unrestricted Endowment (T.R.U.E.) Grants Fund

Awarded \$11,485 to five nonprofits serving Carbondale, Glenwood Springs, and New Castle.

San Juan County Community Fund (SJCCF)

Awarded \$10,500 to five nonprofits serving San Juan County.

West Elk Community Fund (WECF)

Awarded \$37,740 to nine nonprofits serving Hotchkiss, Paonia, Crawford, and surrounding areas.

Our Community Foundation is pleased to partner with these Local Community Funds:



Making a Lasting Impact



David Price had a deep appreciation for nature and a passion for learning. In 2018, he began partnering with us, contributing over \$125,000 to organizations that reflected his charitable interests during his lifetime through a donor-advised fund.

After his passing in 2023, David entrusted our Community Foundation with a significant charitable gift from his estate, providing clear instructions to support causes close to his heart. His generosity will leave a legacy, advancing environmental conservation, educational programs, and community development initiatives. Through his thoughtful planning, David's impact will live on for generations.

Legacy Society

We recognize and appreciate the many community-minded people who have made provisions for a gift to our Community Foundation in their estate plans.

Liane Abrams
Douglas E. Aden and
Lorraine L. Jensen
John and Denise Ahern
Dale and Donna Albertson
Dave Armlovich
Dee Blue
Elaine and Jim Brett
Bill and Rouene Brown
Lynn (Gus) Brownson
Bernie and Mary Beth
Buescher
David Butler
Ed and Barb Chamberlin
Rod and Nina Christ
LuLu Colby
Karen Combs
Anita Cox and Bill
Ekstrand
Bob and Kate Denning
Anne Devine and Ray
Cozzens
Mike and Mary Doring
Norman Dorsey
Rich and Martie Edwards
Ron Eichhorn
Suzi and Jerry Evans
Adele Filener
William and Kathleen Frey
Elizabeth Fulton
Jan and Mike Gage
Richard Gamble

John and Jan Haines
Cheryl and Gordon
Hebenstreit
Steven Hilbert and Phyllis
Stephens
Tom and Sue Hillhouse
Quincy Hines
Craig and Chris Hinkson
Laura Horan
Laura and Doug Johnston
Samuel and Lana Kevan
Dan and Shirley Kramer
Edwin Krebs
Terry Lee and William M.
Perich
John Lorentzen
Sheila Maki
Joan Marasco
Sandra and Glenn Marlin
John and Jan Mayerik
Chuck and Lee Ann McAda
Dennis and Alice McCary
Kathleen A. McGinley
Richard Moore and Sharon
Riegel
Dave and Crystal Murphy
Karen Nicholson
Doug and Becky Noble
Brian and Joyce Olson
Tanya Pappas
John and Verda Patterson
Wendell (Del) and Nancy Petty

Gary and Kathy Pfeufer
Gregg and Sandy Pietak
Dennis and Peggy Pretti
Tony and Sally Prinster
Charlie Quimby and
Susan Cushman
Fred and Sam Rainquet
Grace Roberts
Kay Sather
Will Selden
Roger Sheffield
Verne and Diana Smith
Roger and Sharon Sollenbarger
Charlie and Vicci Spencer
Linda Spencer
Thelma Starner
Katie and Doug Steele
Helen Stenmark
Jim and Melissa Sullivan
Pamela Szédelyi
Gary and Susan Timm
Robin T. Tolan
Steve and Wendy Vanderhoof
Joe Virgona and Mary Mastin
Jack and Lorraine Walker
Steve and Lenna Watson
Bill Welch and Laurae Fortner-
Welch
Jeff Wendland and Ellen Miller
Anne Wenzel and David Miller
George Wheeler
Jim and Debbie Widdows

Harry Willson
Nancy T. Wilson
F.A. Wise and Susan E. Treece
Arlena Wood

We honor those who have passed and whose gifts continue to shape our work today.

Michelle Alford
Tilman and Pat Bishop
John Breckinridge
Genevieve Clough
Bruce Dixon
Matilda W. Fischer
Norman Carl Flohr
Peggy Foster
Evelyn Haley
Tom Huerkamp
Anita Johnson
Eric S. Johnson
Russel and Dorothy
Johnson
Frances L. Klodt
Ken Kriz
Stan and Pam Lochrie
Harley and Marion
Maddock
Charles David McKean
Carol Minion
Virginia Reed Moore
Avon E. and Shirley
F. Myers

Mardell Niles
David Price
Frank and Josephine
Prinster
Joe and Del Prinster
Bill and Wanda
Putnam
Jane Quimby
Perry Rashleigh
Robert Ringstrand
Dorothy Ross
Al and Jean
Schuesswohl
Robert Shales
LaVerne Starbuck
Hal, Mary, and
Norma Sundin
Ellen Jo Waldeck
Lynn Wegener
Dixie Lew Williams
Felicie Williams
Dave and Mary Wood
Jeremiah Yeakel

These are individuals who have informed WCCF of their intentions. We do not mean to omit any names. If you have made plans for a future gift and would like to be recognized as a member of our Legacy Society, or would like more information about planning a charitable legacy gift, please contact us at (970) 243-3767.

2024 Contributors

Thank you to all of our donors. Listed below are those who gave \$1,000 or more in 2024.

Doug Aden and Lorraine Jensen	Cottonwood Veterinary Hospital	Janice L. Jones	Rocky Mountain Health Foundation
Mary Aliota	Dave and Jackie Dapkus	Gregg and Kristine Kampf	Joan Rosenquist
Ivan Alkes	Anne Devine and Ray Cozzens	Eileen Keaveny	Rotary Club of Grand Junction
Alpine Bank	Paul DiMarchi and Ann Raabe	Ellie and David Kehmeier	Horizon Sunrise
Susan and James Alvillar	District 51 Foundation	Pat and Cindy Kennedy	SCL Health/St. Mary's Hospital
Rich Alward and Tamera Minnick	Jil Echols	Estate of Frances L. Klodt	Cheree Seader
Jorg Angehrn	El Pomar Foundation	Jill and Dave Knutson	Jay Seaton
Dick and Marty Arnold	Thomas Ela	Estate of Ken Kriz	Senegy Builders
Charlie and Jackie Berger	Dennis and Barbara Eliason	Carolyn Lenderman and Dave Allen	Michelle Serra and Brad Tompkins
Sarah Bishop	Suzi Evans	Local Jam GJ	Mike and Marie Serra
Estate of Tilman and Pat Bishop	Zach Eyler	Karen Locke	Monique Serra and George Woolsey
Robert Boe	Jill Fasken	Maddock Family Trust	Mark Shaffer
Ann and Dave Brach	Herb Feinzig and Kate	Patricia Mangum	Rita Shenkel
Sally Brands and John Savage	McGinniss-Feinzig	Betsy Marston	Jack and Kay Sibold
Bray & Company	Kay Ferris	Lynn Mattingly	Steven Smith
Brian and Stephanie Bray	Jarred and Hannah Freese	Doug and Chris May	Gregg and Joyce Stanway
Robert and Vicky Bray	Friends of Youth and Nature	Dennis and Alice McCary	Katie Steele
Estate of John Breckinridge	Betty Fulton	Doris McGuire	William Steele
Elaine and Jim Brett	Desiree Garcia	Rick McKay	Estate of Hal Sundin
Judy Briscoe	Margie and Tom Gart	William McNeese	Richard and Beverly Jean Tally
Betsy and William Brodak	Kim and Joe Giannone	Terri and Scott Miller	The Colorado Health Foundation
Jim Brown	Giving for Change LLC	Dick Moore and Sharon Riegel	Lynn and Lorena Thompson
Gus Brownson	Goodwin Foundation	Glenda Moore	Robin Tolan
Robert and Holly Brownson	Shirley K. Gore	John Moritz	Town of Cedaredge
Bernie and Mary Beth Buescher	James Grady and Suzanne Hoest	MSG Ready Mix	Bob Tweedell
Julie Burt	Grand Junction Rotary Club	Natural Investments	Two Rivers Community Foundation
Harriet and Clay Carpenter	Foundation	Natural Soda/Enirgi Group	Richard Udd
Canyon West Church Legacy	Grand Junction Symphony	Corporation	Michael and Michelle Urlacher
Committee	Foundation	Brian and Joyce Olson	Judy Vanderleest and Andy Kelley
CBC I. Real Assets Fund	Grand Mesa Flats	Over the Edge Sports	Joe Virgona and Mary Mastin
Cedaredge Public Library Foundation	Janet Harrington	Patrick Page MD	VK Designs
Barb and Ed Chamberlin	Phillip and Cheryl Hawkins	Thomas and Polly Parrish	Mark Walsh and Kyle Hopkins
Marcia Chesnut	Steve and Julie Heacock	Donna Patterson	Steve and Lenna Watson
Terri Chinn	Abe Herman	Rob Pew III	Estate of Lynn Wegener
Citizens State Bank	Amanda Hill	Estate of David Price	Bill Welch and Laurae Fortner-Welch
LuLu Colby	Sue and Tom Hillhouse	Hazel and Doug Price	Anne Wenzel and David Miller
Kevin Cole	Steve Hitchcock	Dan and Elise Prinster	Dan and Cheryl Wenzinger
Nicholas Cole	Laura E. Horan	Terry Randall	Western Colorado Chorale
Colorado Northwestern Community	Kathleen Housh	Brian Renfrow	George Wheeler
College Foundation	Doug and Kathryn Hovde	Les and Ann Renfrow	Harry Willson
Karen Combs	Derek Irick	Gudrun Rice and Charlie Kerr	Arlena Wood
CommWest	Rob and Melissa Jankovsky	Lynette Richardson	Brad Wright
Gena and John Cooper	Bob and Patti Johnson	Shawn and Erica Ridgley	Janice Yarbrough
CORES	Laura and Doug Johnston	Ames Risch	Lois Sherrick Ziemann





Grants

In 2024, our Community Foundation awarded \$7.6 million in grants. Below is a listing of grants over \$5,000.
To see the full list, visit wc-cf.org/for-nonprofits.

A Special Place
 Access AfterSchool
 All Points Transit
 Blue Sage Center for the Arts
 CASA of the 7th Judicial District
 Center for Children
 Center for Independence Inc
 Clifton Christian Church Food Bank
 Colorado Canyons Association
 Colorado Discover Ability
 Colorado National Monument Association
 Colorado West Land Trust
 Community Food Bank
 Confluence Center of Colorado
 Counseling and Education Center
 Delta Egyptian Theater
 Doors 2 Success
 Eagle River Coalition
 Eureka! McConnell Science Museum
 Families Plus

FocusedKids
 Foster Alumni Mentors
 Friends of the Ouray Public Library
 Friends of Youth and Nature
 Girls on the Run of the Grand Valley
 GJ Blackout Fieldhouse
 Good Samaritan Clinic of Western Colorado
 Grand Junction Symphony Orchestra
 Grand Mesa Nordic Council
 Grand River Meals on Wheels
 Grand Rivers Humane Society
 Grand Valley Catholic Outreach
 Habitat for Humanity of Mesa County
 Habitat for Humanity of the Roaring Fork Valley
 Harmony Acres Equestrian Center
 Haven House of Montrose
 Hilltop Community Resources
 Hispanic Affairs Project
 Home Trust of Ouray County

HomewardBound of the Grand Valley
 HOPE of the Grand Valley
 HopeWest
 Housing Resources of Western Colorado
 Joseph Center
 Kids Aid
 La Plaza
 LIFT-UP
 MarillacHealth
 Mesa County Libraries Foundation
 Mesa County Meals on Wheels
 Mesa County Partners
 Mesa County School District 51
 Mutual Aid Partners
 Nature Connection
 North Fork Valley Creative Coalition
 Ouray County Food Pantry
 Ouray County Historical Society
 Ouray County Performing Arts Guild
 PEER Kindness

River Bridge Regional Center
 RiversEdge West
 Riverside Education Centers
 Roaring Fork Outdoor Volunteers
 Roice-Hurst Humane Society
 Salvation Army
 Sharing Ministries
 Sopris Sun
 Stepping Stones of the Roaring Fork Valley
 Summit 54
 TANK Center for Sonic Arts
 Theatre Project of Grand Junction
 Toilet Equity
 Voyager Youth Program
 Western Colorado Alliance
 Western Colorado Center for the Arts
 Western Slope Food Bank of the Rockies
 Wilderness Workshop



Funds

Thank you, donors, for choosing our Community Foundation as your partner in giving by establishing a fund. Your generosity is making a powerful impact in the communities we serve.

Donor Advised Funds

Admire Family Memorial Fund
 Alexandria and India Wanebo Fund
 Alkes Family Fund
 Amy Largent Schutter Memorial Fund
 Amy Nuernberg and Owen O'Fallon Native American Fund
 Anne Wenzel and David Miller Fund
 Anthony F. and Sally L. Prinster Fund
 Arlena Wood Fund
 Arthur L. and Ruth Y. Moss Fund
 Becky and Kelvin Kent Fund
 Bob and Kate Denning Fund
 Bob and Patti Johnson Fund
 Bray Cares Foundation
 Bud and Phyllis Brownson Fund
 Canyon West Church Legacy Fund
 Catherine Lepinotes Shiolas Legacy Fund
 Chauncey Fund
 Chris and Connie Jouflas Family Foundation
 Clyde and Josephine Biggs Small Grants Fund
 Colby and Leslie Barrett Family Fund
 Colby's Fund
 Conner Family Fund
 Conrado Family Fund
 Cushman-Quimby Family Fund
 Darlene Cox Fund
 Dave and Crystal Murphy Family Fund
 Dave and Mary Wood Fund

David and Ellie Kehmeier Fund
 Deb and Larry Sullivan Family Fund
 Debbie and Jim Widdows Family Foundation
 Dorothy and Russel Johnson Fund
 EDGE Trail Fund - Fruita
 EJB Fund
 Ela Family Fund
 Elizabeth Fulton Gratitude Fund
 Elizabeth Jones Fund
 Farley Family Fund
 Fortner Welch Fund
 Four Sons Fund
 Frank J. and Josephine R. Prinster Fund
 Freese Family Charitable Fund
 George B. McKinley Family Fund
 Grand Junction Lions Club Endowment Fund
 Harley and Marion Maddock Fund
 Harold and Margaret Porter Family Fund
 Helen B. Christensen Howe Fund
 Herbert J. Feinzig & Kathleen W. McGinniss-Feinzig, M.D. Fund
 Hoest Grady Charitable Fund
 Hoffman Family Fund
 Horizon Sunrise Rotary Endowment Fund
 J. J. and I.B. Uri Fund
 Kampf Family Fund
 Kelly Tonozzi Charitable Fund

Ken and Stacy Basinger Family Fund
 Kenneth A. Heitt Fund
 Kevan Family Fund
 Kevin R. Prinster Fund
 Kim Richardson Memorial Fund
 Laura and Doug Johnston Fund
 Levine Family Fund
 Linda Grace McBride Fund
 Lorentzen Family Fund
 Lorraine and Jack Walker Fund
 Lummis Family Fund
 Marston-Lehmann Family Fund
 Mary Aliota Fund
 Mary and Scott Plumb Fund
 Mary Beth and Bernie Buescher Charitable Giving Fund
 McCary Family Fund
 Mechau Family Fund
 Mike and Kay Ferris Family Fund
 Murray Family Fund
 Nancy T. Wilson Fund
 Neal and Carolyn Harper Fund
 Orbanek-Frank Fund
 Pass It On Fund
 Patricia C. James Fund
 Peter Bergh Fund
 Phil and Melissa Jones Fund
 Quimby Family Foundation
 Radamus Family Fund
 Re-A-Ranger Charitable Fund
 Reed Charitable Fund

Rick McKay Fund
 Ridgley Family Foundation
 Ringstrand Family Fund
 Robert and Sandra Nicholson Charitable Fund
 Rocky Mountain Health Plans Employee Charitable Fund
 Ruth and Pat Gormley Fund
 Scofield Family Fund
 Scott Fasken Fund
 Scruby Brothers Fund
 See A Need Fund
 Shawcroft Family Fund
 Shenk Family Fund
 SL Meyer Family Fund
 Susan and Thomas Hillhouse Fund
 Thomas B. Beard Fund
 Tim and Irene Sullivan Memorial Fund
 Tim Schultz Fund for Rural Colorado
 Timothy Hackett Memorial Fund
 Tom and Jean Paradis Fund
 Vanderhoof Family Fund
 Wegener/Combs Fund
 Wenzel-Miller Family Fund
 William G. McGowan Fund
 Wright Family Fund

Nonprofits with Agency Funds

Art Center of Western Colorado Foundation
 Cedaredge Public Library Foundation
 Colorado Northwestern Community College
 Colorado Riverfront Foundation
 Colorado West Land Trust
 Community Food Bank
 COPMOBA
 District 51 Foundation
 Friends of the Cedaredge Public Library
 Friends of Youth and Nature
 Glenwood Springs Kiwanis Club Foundation
 Grand Junction Rotary Club Foundation
 Grand Junction Symphony Foundation

Grand Valley Audubon Society
 Grand Valley Historical Society
 Grand Valley/Parachute Kiwanis Club Foundation
 Hilltop Community Resources
 HopeWest
 Immaculate Heart of Mary Catholic Church
 Kids Aid
 La Plaza
 Lake Fork Community Foundation
 MarillacHealth
 Mesa County Partners
 Messiah Choral Society
 Montrose Lions Foundation

Mount of the Holy Cross Lutheran Church
 Ouray County Historical Society
 Ouray County Performing Arts Guild
 Roice-Hurst Humane Society
 Rotary Club of Cedaredge Foundation
 Sharing Ministries
 Sozo Youth Sanctuary Foundation
 Surface Creek Animal Shelter
 Technical College of the Rockies
 United Way of Mesa County
 Valley View Hospital Foundation
 Western Colorado Chorale
 YouthZone Foundation

Field of Interest

Alvillar Fund for Hispanic Youth
 Anita Nickels Johnson Fund
 for Girls in STEM
 Brownson Memorial Fund
 Bruce Dixson Fund
 Carol C. Minion Fund
 Conservation Fund
 Conservation/Outdoor
 Rec/Environment Fund
 Dave McKean Fund
 Dorothy Ross Fund
 Eagle River Fund

Eric S. Johnson Fund
 Evelyn and Glen Haley Fund
 for Animal Care
 Evelyn and Glen Haley Fund
 for the Arts
 Evelyn and Glen Haley Fund
 for Women and Girls
 Hope Haven Fund
 Hunger Fund
 Janice M. Yarbrough Youth
 & Senior Fund
 Karen's Animal Care Fund

Kelly James Markham Fund
 Kenneth K. Yata Fund
 Mary Catherine Gallarnau Blue Fund
 Mary Ferguson Carbondale Teacher
 Mini Grants Fund
 Pat and Tillie Bishop Legacy Fund
 Pfeufer Animal Fund
 Rashleigh Fund
 Roaring Fork Valley Community
 Health Fund
 Shenkel Family Fund for At-Risk Children
 Sibold Family Fund

Stan and Pam Lochrie Fund
 Suicide Prevention and Awareness Fund
 Trutta Fund for Veterans
 Waldeck Fund for Homeless and
 Affordable Housing
 West Garfield Community Projects Fund
 Western Colorado Health Fund
 WSSA Youth Recreation Fund
 Youth Suicide Fund
 YouthStrong Fund

Designated Funds

Alvillar Fund for Girl Scouts of
 Western Colorado
 Barb and Ed Chamberlin
 Giving Fund
 Bette Thul Fund for Make-a-Wish
 Foundation
 Bette Thul Fund for Smile Train
 Bruce Dixson Fund for
 Salvation Army
 Caring for the Valley Fund
 Cook Veterans Memorial Fund
 Dale and Donna Albertson Fund
 for Center for Children
 Dave and Sherry Farny Fund
 Dave McKean Fund
 Didrickson-Niles Fund for
 Montrose School District
 Don Petersen Fund for Cedaredge
 Public Library
 Don Petersen Fund for SCVHS
 Chapel
 Ed and Frannie Ellinwood Fund
 for St. Mary's Residency Program
 Elizabeth B. Harris Family Fund
 Finnigan Fund
 G and K Pfeufer Fund
 Grand Valley Audubon Society Fund
 Grand Valley Catholic Outreach Fund
 Harley and Marion Maddock Fund
 for First United Methodist Church
 Harley and Marion Maddock Fund
 for HopeWest

Harold and Ruth Moss Charitable
 Foundation
 Herbert J. Feinzig & Kathleen W.
 McGinniss-Feinzig, M.D. Fund
Holy Family Catholic School Funds:
 Albert and Jeanne Chin
 Cecilia Prinster and Sandra
 Prinster Griffin
 Danny Buescher Memorial
 Hall of Fame
 James and Carol Cadez
 Joe and Del Prinster
 John and Cathey Pabst
 Larry Helfter
 Luff Family
 Prinster Family
 Robert G. Shales
 Schumacher Family
 STEM Award
 Teacher Enrichment
 Wells Family
 Hotchkiss Fund for NFHS-
 Hotchkiss Ranches Scholarship
 Jack Lanning Memorial Fund
 for Symphony of the Valley
 Jesse and Betsy Boyce Fund
 Jim and Mercedes Beck Fund for
 First United Methodist Church
 Ken Kriz Fund
 Kids Aid Fund
 Lutheran Church and School of
 the Messiah Endowment Fund

MarillacHealth Fund
 Mary and Dave Wood Fund
 for Ouray Public Library
 Mesa County Business Education
 Foundation Fund
 Mesa County Partners Fund
 Mike and Marian Wanebo Fund
 for Catholic Outreach
 Mind Springs Health Fund for
 Women's Recovery Center
 Mr. Whitcombe Fund for Rifle
 High School Students
 MS Society - Colorado Chapter
 Oliver Reed and Virginia Reed
 Moore Fund for School District 51
 Out-of-Home Placed At Risk
 Children's Enrichment Fund
 Peggy Foster Fund for the Western
 Colorado Center for the Arts
 Porter Family Fund for Delta
 United Methodist Church
 Re-A-Ranger Fund
 Rifle Community Foundation
 Merit Award Fund
 Roy and Pamela Blythe Fund
 for D51 Foundation
 Serra Family Fund
 Somerville Family Fund for Rocky
 Mountain PBS
 Stephen B. and Anita Nickels
 Johnson Fund
 Sunshine Oncology Legacy Fund

Susan Jones Hillhouse Fund for
 Scholarships for Performing Arts
 Thomas Huerkamp Fund for Delta
 County Hospital Foundation
 Thomas Ward Osborn
 Scholarship Fund
 Tilman and Pat Bishop Fund
 for CMU
 Tom and Sue Hillhouse Fund for
 Ouray County Historical Society
 United Way of Mesa County Fund
Waldeck Funds:
 Grand Valley Catholic Outreach
 Habitat for Humanity
 Hilltop's Latimer House
 HomewardBound
 HopeWest
 MarillacHealth
 Mesa County Partners
 Roice-Hurst Humane Society
 Western Colorado Aids Project
 Fund
 Western Colorado Botanical
 Society Fund
 Western Slope Center for
 Children Fund

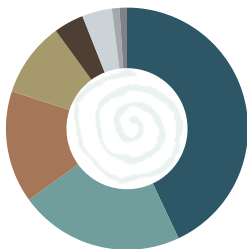
Financial Summary

Statement of Financial Position

		2024	2023
Assets	Cash and investments	\$ 176,221,098	\$ 160,864,749
	Beneficial interest in trusts	2,803,326	2,822,651
	Oil and gas royalty interest	1,165,217	1,256,696
	Property and equipment	4,788,442	4,747,400
	Other assets	1,569,612	264,060
	Total Assets	\$ 186,547,695	\$ 169,955,556
Liabilities	Accounts payable and accrued expenses	\$ 414,355	\$ 262,478
	Agency funds	7,173,833	6,520,206
	Note payable	1,464,057	1,480,216
	Total Liabilities	\$ 9,052,245	\$ 8,262,900
Net Assets	Net Assets	\$ 177,495,450	\$ 161,692,656
	Total Liabilities and Net Assets	\$ 186,547,695	\$ 169,955,556

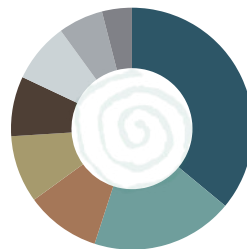
Statement of Activities

Revenue	Contributions	\$ 13,363,421	\$ 5,546,336
	Other income	65,234	58,128
	Total Revenue	\$ 13,428,655	\$ 5,604,464
Grants & Expenses	Grants/Scholarships	\$ 8,306,118	\$ 6,511,169
	Other program expenses	1,340,367	1,013,250
	Supporting services	1,099,797	876,375
	Total Grants and Expenses	\$ 10,746,282	\$ 8,400,794
Change in Net Assets	Change in net assets from operations	\$ 2,682,373	\$ (2,796,330)
	Net return on investments	13,120,421	18,766,827
	Change in Net Assets	\$ 15,802,794	\$ 15,970,497



Total Assets By Fund Type

Designated	43%	Agency	4%
Donor Advised	22%	Administrative	4%
Field of Interest	15%	Community Grants	1%
Scholarship	10%	Geographic	1%



Grants By Program Area

Human Services	36%	Health	8%
Education & Scholarships	19%	Environment	8%
Youth Development	10%	Animal Care	6%
Community	9%	Arts & Culture	4%

This summary Statement of Financial Position and Statement of Activities is taken from an independent audit for 2024. Our 990 tax return and other financial and investment performance information is available on our website.

Confirmed in Compliance with National Standards for U.S. Community Foundations



A word about our logo...

The **circle** reflects a sense of community and our connectedness to others.
The **spiral** reflects the power of endowment, a permanent gift that keeps on giving.
The **petroglyph** symbolizes those who have been here before us and who have left their mark.

Our Board of Directors

Dan Prinster, *Chair*, Grand Junction
Terri Chinn, *Vice Chair*, Grand Junction
Robin Tolan, *Secretary*, Glenwood Springs
David Lane, *Treasurer*, Delta
Mary Beth Buescher, Grand Junction
Gena Cooper, Grand Junction
Raul De Villegas-Decker, Grand Junction
Abram Herman, Grand Junction
Gregg Kampf, Grand Junction
David Livingston, Hotchkiss

Carlton Mason, Montrose
Doug May, Grand Junction
Doris McGuire, Cedaredge
Joey Montoya-Boese, Montrose
Tom Parrish, Grand Junction
Hazel Stevens Price, Ridgway
Chris Unfug, Grand Junction
Judy Vanderleest, Grand Junction
Bill Welch, Cedaredge

Our Staff



Anne Wenzel
President & CEO



Emily Orbanek
Director of Programs
& Special Projects



Kristin Lynch, CAP®
Director of Development
& Legacy Gifts



Cheree Seader
Director of Finance
& Operations



Tedi Gillespie
Grants & Community
Outreach Director



Renee Smith
Marketing &
Communications Director



Vickery Hall
Regional Outreach
Director



Terri Benson
Operations Manager



Erin Doebele
Senior
Accountant



Abraham Ruiz
Staff Accountant



Jody Valente
Program Officer



Sarah Fuller
Program Officer



Deirdre McLoughlin
Programs
Administrator



Talitha Costello
Database &
Records Associate

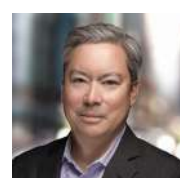


Jesse Redmond
Development & Donor
Relations Associate

Our Professional Advisors



Sheila Herrera
Moss Adams



Greg Druehl
Mason Investment Advisors



Erik Estrada
Sector Law



**WESTERN COLORADO
COMMUNITY FOUNDATION**

Physical Address
128 North 5th Street
Grand Junction, CO 81501

Mailing Address
PO Box 4334
Grand Junction, CO 81502



**WESTERN COLORADO
COMMUNITY FOUNDATION**

PO Box 4334, Grand Junction, CO 81502

RETURN SERVICE REQUESTED

NON-PROFIT ORG
US POSTAGE PAID
GRANDJCT, CO
PERMIT #134